



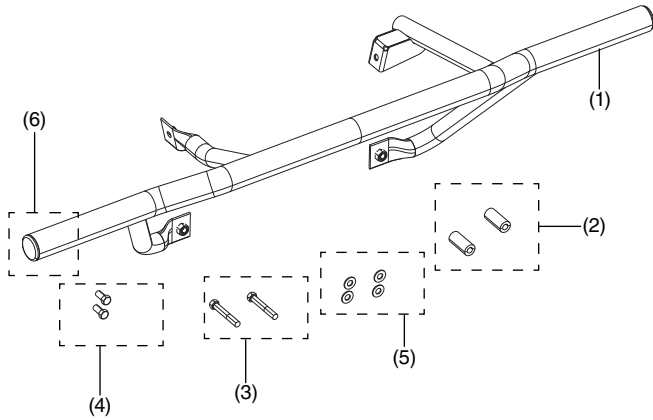
HONDA

INSTALLATION INSTRUCTIONS

Accessory	Application	Publication No.
REAR BUMPER P/N 08P74-HL5-A00	SXS500M2	MII 14948
		Issue Date
		June 2014

Honda Dealer: Please give a copy of these instructions to your customer.

PARTS LIST



No.	Description	Qty
(1)	Rear bumper	1
(2)	Collar	2
(3)	Bolt, 10 x 65 mm	2
(4)	Bolt, 10 x 20 mm	2
(5)	Washer	4
(6)	Pipe end cap	2

TOOLS REQUIRED

Open-end wrench (12 mm)
Torque wrench
Socket (12 mm)

TORQUE CHART

Tighten all screws, bolts, and nuts to their specified torque values. Refer to the Service Manual for the torque values of the removed parts.

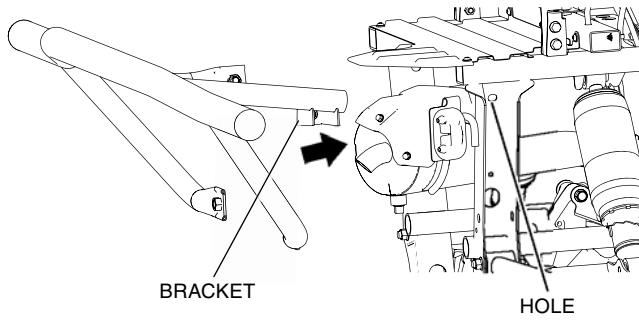
Item	N·m	kgf·m	lbf·ft
Bolt, 10 mm	39	4.0	28.8

USE AND CARE INFORMATION

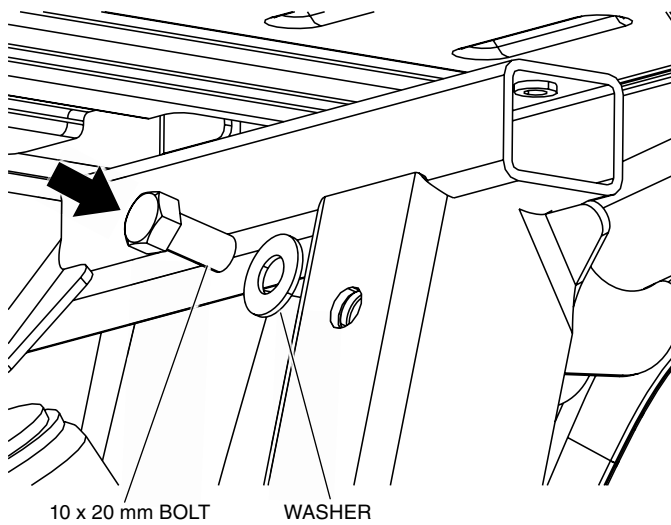
Check the accessory mounts frequently and retighten if necessary.

INSTALLATION

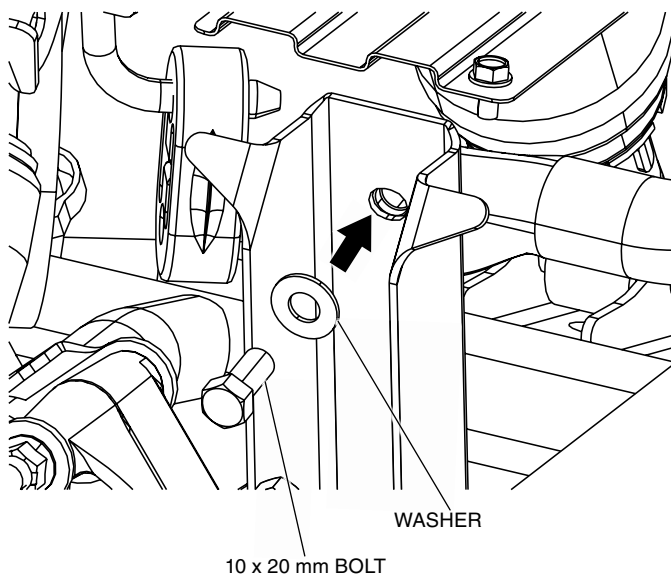
1. Align the top right bracket with the hole in the frame as shown.



2. Loosely install the 10 x 20 mm bolt and washer from the other side as shown.



3. Loosely install the 10 x 20 mm bolt and washer on the top left side as shown.



3. Align the collar as shown. Loosely install two 10 x 65 mm bolts and washers at the bottom mounting locations as shown.
4. Tighten all hardware to the specification in the Torque Chart.

